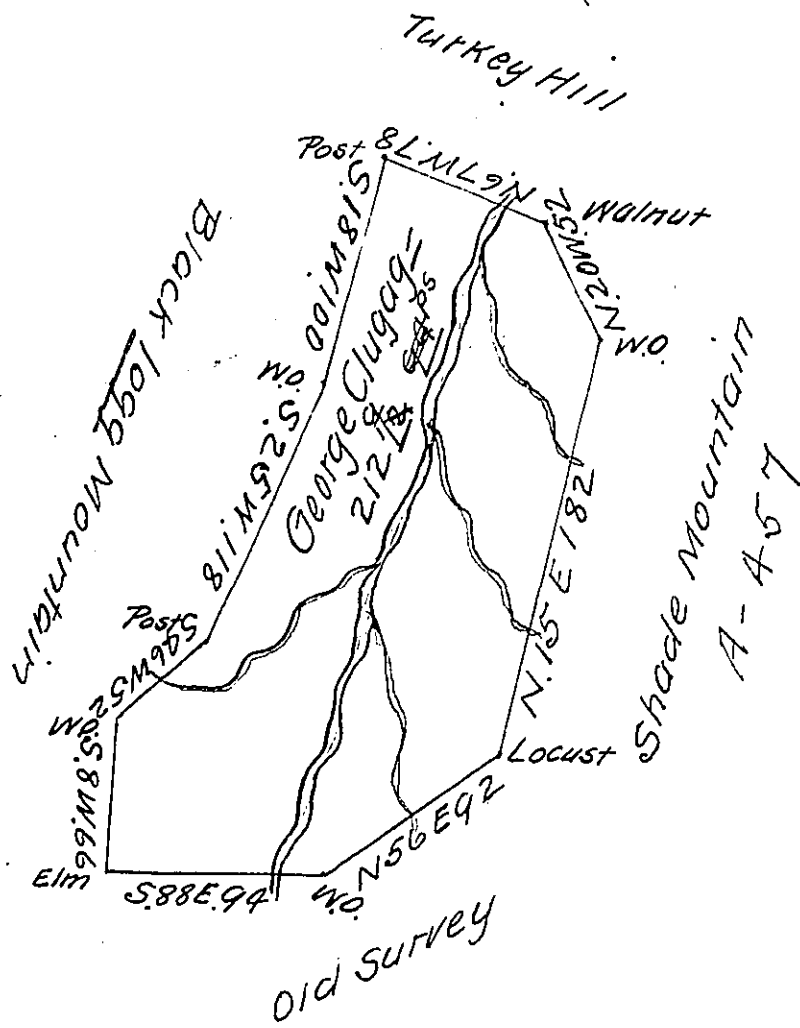


A-172-92



A Draught of a Tract of Land situate on Shade Branch
 joining Turkey Hill Tract in Bedford County containing
 Two hundred and twelve acres and 94 p. and the usual
 allowance of Six Cent for Roads.

Surveyed the 1st day of March 1786 in pursuance of
 an order dated the 27th of March 1767

N^o 3236

George Woods D.S.

John Lukens Esq S.G.

IN TESTIMONY that the above is a copy of the original remaining on file in
 the Department of Internal Affairs of Pennsylvania, made
 conformably to an Act of Assembly approved the 16th day of
 February, 1833, I have hereunto set my Hand and caused
 the Seal of said Department to be affixed at Harrisburg,
 this twenty second day of March 1912

Henry Hoover
 Secretary of Internal Affairs.